



CLARKE & CLARKE

STUDIO  
**g**

AUTUMN/WINTER COLLECTIONS 2021







(Above) Drapes: Nakuru Charcoal/Linen Sofa: Habitat Mineral  
Cushions left to right: Amalfi Blush, Francis Denim/Midnight Footstool: Ada Denim

## Vintage Collection

For a truly iconic scheme, look no further than Vintage - a vibrant eclectic mix of classic patterning and reimagined design. From the Jacobean style of Adeline to the embroidered weave of Bergamot, Vintage introduces a compelling conversational style. Dual purpose prints, weaves and embroideries are available in four distinctive colour stories.



(Top) Armchairs: Francis Denim/Midnight Cushions: Nakuru Midnight/Linen (Bottom left) Cushions top to bottom: Adeline Blush/Raspberry, Bergamot Blush/Linen, Francis Midnight Velvet, Habitat Lagoon, Francis Denim/Midnight, Nakuru Ivory/Linen, Blush  
Footstools left to right: Lucienne Raspberry/Linen, Ada Linen (Bottom right) Drapes: Adeline Blush/Raspberry Canopy: Nakuru Blush  
Cushions Amalfi Dove, Lucienne Raspberry/Linen Throw: Ada Linen Ottoman: Francis Blush/Raspberry  
\*Rugs supplied by Asiatic.co.uk





HABITAT  
Lagoon  
F1546/02



FRANCIS  
Teal Velvet  
F1545/02



NAKURU  
Mineral  
F1547/05



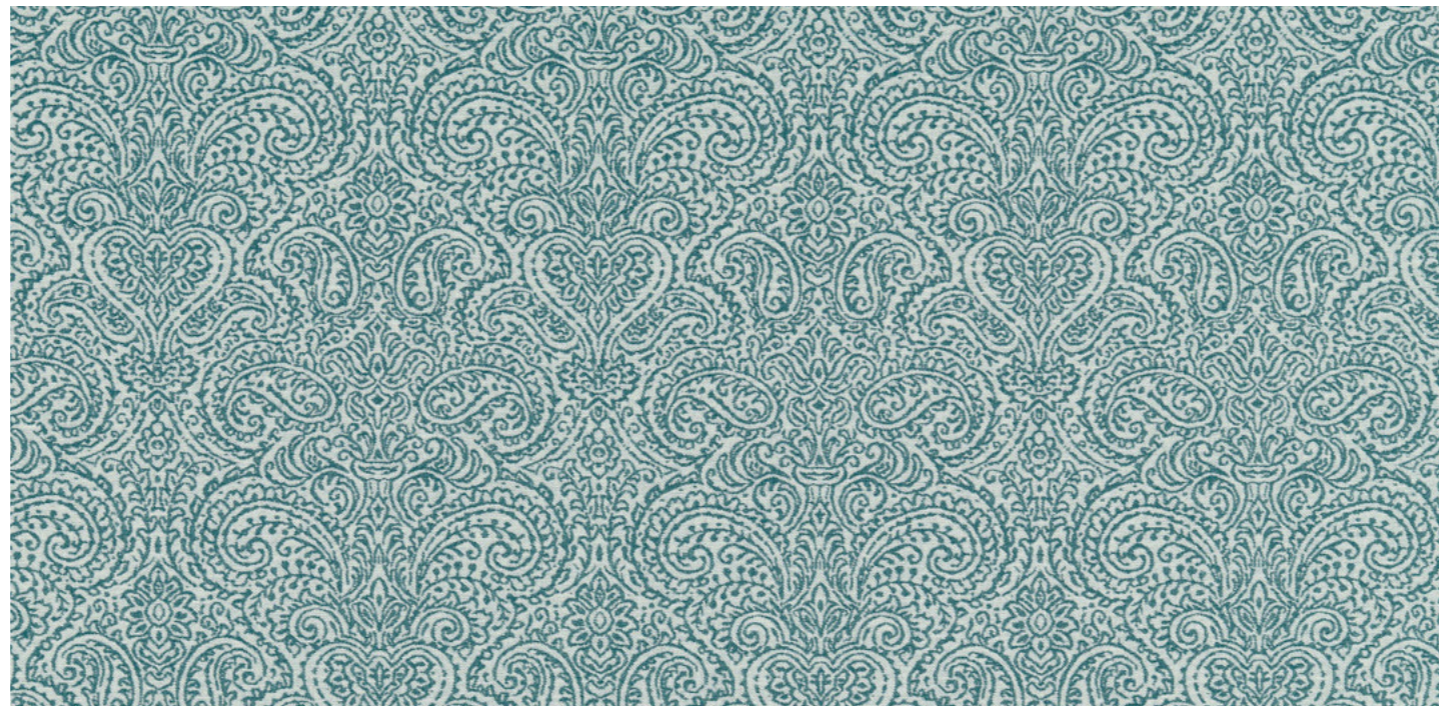
LUCIENNE  
Teal  
F1542/04



Vintage Collection



BERGAMOT  
Multi/Linen  
F1541/04



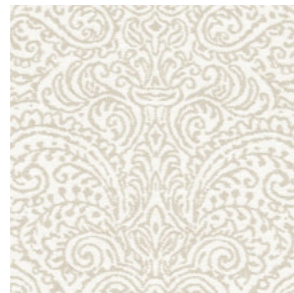
ADA  
Teal  
F1540/06



ADELINE  
Teal  
F1543/04



ADELINE  
Blush/Raspberry  
F1543/02



ADA  
Linen  
F1540/04



NAKURU  
Blush  
F1547/01



FRANCIS  
Blush/Raspberry  
F1544/02



BERGAMOT  
Blush/Linen  
F1541/01



LUCIENNE  
Raspberry/Linen  
F1542/03



NAKURU  
Midnight/Linen  
F1547/04



ADA  
Denim  
F1540/03



BERGAMOT  
Denim/Midnight  
F1541/03



LUCIENNE  
Mineral  
F1542/02



HABITAT  
Mineral  
F1546/03



ADELINE  
Denim/Midnight  
F1543/03



ADA  
Midnight  
F1540/05



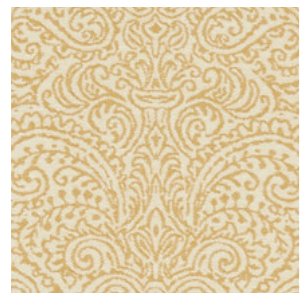
FRANCIS  
Denim/Midnight  
F1544/03



FRANCIS  
Midnight Velvet  
F1545/01



ADELINE  
Antique/Charcoal  
F1543/01



ADA  
Antique  
F1540/01



BERGAMOT  
Charcoal/Linen  
F1541/02



NAKURU  
Charcoal/Linen  
F1547/02



HABITAT  
Charcoal/Linen  
F1546/01



NAKURA  
Ivory/Linen  
F1547/03



ADA  
Charcoal  
F1540/02

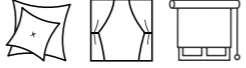


FRANCIS  
Antique/Charcoal  
F1544/01



LUCIENNE  
Charcoal/Linen  
F1542/01



End Use Endnutzeranwendung Usó final Usage Applicazioni		Adeline, Bergamot & Nakuru: 		Composition Zusammensetzung Composición Composizione		COT- Cotton- Baumwolle- Algodón- Coton- Cotone LI- Linen- Leinen- Lino- Lin- Lino PES- Polyester- Polyester- Poliéster- Poliestere- Poliestere VI- Viscose- Viskose- Viscosa- Viscose- Viscosa. EMB- Embroidery- Stickerei- Bordado- Broderie- Ricamo				
Design Design Diseño Tissu Linea		Colours Farben Colores Couleurs Colori	Vertical Repeat Senkrechter Musterrapport Repetición vertical Motif vertical Ripetizione verticale	Horizontal Repeat Waagerechter Musterrapport Repetición horizontal Motif horizontal Ripetizione orizzontal	Fabric Width Breite Anchura Largeur Larghezza tessuto	Weight Gewicht Peso Poids Peso	Composition Zusammensetzung Composición Composizione	Care Instructions Pfleheinweise Indicaciones para el cuidado Instructions d'entretien Istruzioni per la cura	Martindale Abrasion Martindale-Abriebtest Abrasión Martindale Abrasión de Martindale Resistenza all'abrasione- Martindale	FR Specification Brandschutzspezifikation Especificación ignífuga Spécifications ignifuges Specifica FR
Ada	6	67cm (26 3/8")	34cm (13 3/8")	136cm (53 9/16")	415g/m <sup>2</sup> (12.24oz/yd <sup>2</sup> )	50% PES, 43% COT, 7% LI	Ⓟ	18 000	*Meets when treated: Domestic Upholstery IMO8 & Contract Drapery.	
Adeline	4	48cm (18 7/8")	43cm (16 15/16")	130cm (51 3/16")	218g/m <sup>2</sup> (6.4oz/yd <sup>2</sup> )	76% PES, 24% COT EMB: 100% VI	Ⓟ	n/a	*Meets when treated: Contract Drapery.	
Bergamot	4	46.5cm (18 5/16")	45cm (17 3/4")	135cm (53 1/8")	340g/m <sup>2</sup> (10.03oz/yd <sup>2</sup> )	82% PES, 11% COT, 7% LI EMB: 100% VI	Ⓟ	n/a	*Meets when treated: Contract Drapery.	
Francis	3	45.7cm (18")	34.5cm (13 9/16")	138cm (54 5/16")	327g/m <sup>2</sup> (9.64oz/yd <sup>2</sup> )	75% VI, 25% LI	Ⓟ	35 000	Meet untreated: BS5852 Source 0. *Meets when treated: Domestic Upholstery, Contract Drapery, Contract Upholstery & IMO8.	
Francis Velvet	2	45.7cm (18")	34.5cm (13 9/16")	138cm (54 5/16")	406g/m <sup>2</sup> (11.9oz/yd <sup>2</sup> )	100% PES	Ⓟ	50 000	*Meets when treated: Domestic Upholstery, Contract Drapery, Contract Upholstery (interliner required) & IMO8.	
Habitat	3	64cm (25 3/16")	69cm (27 3/16")	138cm (54 5/16")	327g/m <sup>2</sup> (9.64oz/yd <sup>2</sup> )	75% VI, 25% LI	Ⓟ	35 000	Meet untreated: BS5852 Source 0. *Meets when treated: Domestic Upholstery, Contract Drapery, Contract Upholstery & IMO8.	
Lucienne	4	65cm (25 9/16")	69cm (27 3/16")	138cm (54 5/16")	284g/m <sup>2</sup> (8.3oz/yd <sup>2</sup> )	70% VI, 30% LI	Ⓟ	20 000	Meets untreated: BS5852 Source 0. *Meets when treated: Domestic Upholstery & Contract Drapery.	
Nakuru	5	46.8cm (18 7/16")	43.6cm (17 3/16")	131cm (51 9/16")	218g/m <sup>2</sup> (6.4oz/yd <sup>2</sup> )	76% PES, 24% COT EMB: 100% VI	Ⓟ	n/a	*Meets when treated: Contract Drapery.	



## Dimora Collection

'Dimora', meaning 'grand and spacious', is a combination of abstract effects and irresistible textural details. The marbled looks of Tessuto beautifully complement the metallic highlights of our foil velvet or the decadence of our embroidered velvet, Velluto. Available in four rich colour stories, from deep midnight tones to lavish ivory hues, this statement collection adds sophistication to any space.



(Top) Screen: Sontuoso Midnight Sofa: Velluto Teal Cushions left to right: Nuvola Teal, Ricamo Teal Drape: Sontuoso Teal  
(Bottom left) Drape: Tessuto Nero/Silver (Bottom right) Drape: Velluto Nero Cushions left to right: Ricamo Nero, Sontuoso Mink, Velluto Nero



Drape: Velluto Nero Sofa: Nuvola Pewter Cushions left to right: Ricamo Nero, Sontuoso Mink, Velluto Nero



Dimora Collection



VELLUTO  
Nero  
F1549/02



SONTUOSO  
Mink  
F1550/03



RICAMO  
Nero  
F1548/03



NUVOLA  
Ivory  
F1551/01



SONTUOSO  
Nero  
F1550/04



TESSUTO  
Nero/Silver  
F1552/03



SONTUOSO  
Teal  
F1550/06



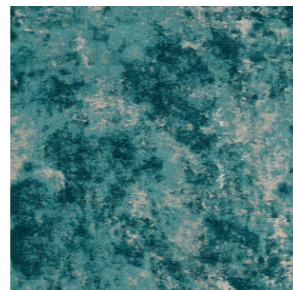
RICAMO  
Teal  
F1548/06



RICAMO  
Ivory  
F1548/01



VELLUTO  
Teal  
F1549/04



NUVOLA  
Teal  
F1551/04



TESSUTO  
Teal  
F1552/04



SONTUOSO  
Midnight  
F1550/02



RICAMO  
Midnight  
F1548/02



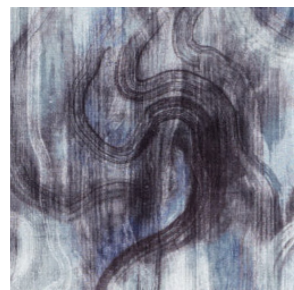
RICAMO  
Ochre  
F1548/04



VELLUTO  
Midnight  
F1549/01



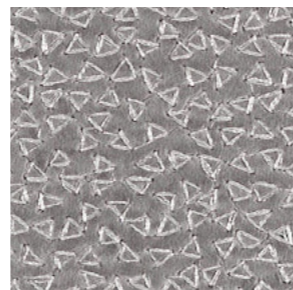
NUVOLA  
Midnight  
F1551/02



TESSUTO  
Midnight/Silver  
F1552/01



SONTUOSO  
Silver  
F1550/05



RICAMO  
Pewter  
F1548/05



VELLUTO  
Pewter  
F1549/03



SONTUOSO  
Ivory  
F1550/01





NUVOLA  
Pewter  
F1551/03



TESSUTO  
Natural  
F1552/02



End Use Endnutzeranwendung Us final Usage Applicazioni		Ricamo & Suntuoso: 		Care Instructions Pflegethinweise Indicaciones para el cuidado Instructions d'entretien Istruzioni per la cura	Suntuoso:  Hand Wash	Composition Zusammensetzung Composición Composition Composizione	COT - Cotton - Baumwolle - Algodón - Coton - Cotone LI - Linen - Leinen - Lino - Lin - Lino PES - Polyester - Polyester - Poliéster - Poliestere - Poliestere VI - Viscose - Viskose - Viscosa - Viscose - Viscosa MY - Metallic Yarn - Metallgarn - Hilo Metálico- Fil Métallique- Filato Metallico EMB- Embroidery - Stickerei - Bordado - Broderie - Ricamo	
Design Design Diseño Tissu Linea	Colours Farben Colores Couleurs Colori	Vertical Repeat Senkrechter Musterrapport Repetición vertical Motif vertical Ripetizione verticale	Horizontal Repeat Waagerechter Musterrapport Repetición horizontal Motif horizontal Ripetizione orizzontal	Fabric Width Breite Anchura Largeur Larghezza tessuto	Weight Gewicht Peso Poids Peso	Composition Zusammensetzung Composición Composition Composizione	Martindale Abrasion Martindale-Abriebtest Abrasion Martindale Abrasion de Martindale Resistenza all'abrasione- Martindale	FR Specification Brandschutzspezifikation Especificación ignífuga Spécifications ignifuges Specifica FR
Nuvola	4	40cm (15 3/4")	47cm (18 1/2")	141cm (55 1/2")	270g/m <sup>2</sup> (7.9oz/yd <sup>2</sup> )	34% VI, 31% PES, 19% LI, 16% COT	45 000	*Meets when treated: Domestic Upholstery, Contract Upholstery, Contract Drapery & IMO8.
Ricamo	6	15.5cm (6 1/8")	8.6cm (3 3/8")	138cm (54 5/16")	433g/m <sup>2</sup> (12.77oz/yd <sup>2</sup> )	100% PES, EMB: 50% VI, 50% MY (Zari)	n/a	Not treatable to FR standards.
Suntuoso	6	Foil Print - 64cm (25 3/16")	70cm (27 9/16")	140cm (55 1/8")	350g/m <sup>2</sup> (10.3oz/yd <sup>2</sup> )	100% PES	n/a	Not treatable to FR standards.
Tessuto	4	90cm (35 7/16")	49cm (19 5/16")	139cm (54 3/4")	370g/m <sup>2</sup> (10.9oz/yd <sup>2</sup> )	60% VI, 23% COT, 17% LI	Meets 15 000 rubs with the addition of FR backcoat.	*Meets when treated: Domestic Upholstery & Contract Drapery.
Velluto	4	15.5cm (6 1/8")	22.5cm (8 7/8")	138cm (54 5/16")	456g/m <sup>2</sup> (13.4oz/yd <sup>2</sup> )	100% PES EMB: 56% COT, 44% VI	15 000	*Meets when treated: Domestic Upholstery & Contract Curtains.



## Pavilion Collection

With a glorious countryside feel, Pavilion sets the scene for summer picnics and long walks in the woods. Discover Pavilion's four brand new designs with influences from a rich variety of flora, and coordinating semi-plains that are set to bring a refreshing feel to interior spaces. Embroidered finishes and soft brushed jacquards introduce charming tactility to this collection, available across five charming colour groups.



(Top left) Chair: Audette Mineral Cushion: Monique Apple/Mineral Footstool: Brigitte Apple/Mineral Drapes: Monique Apple/Mineral  
(Top right) Drapes: Rochelle Apple/Mineral Footstool: Miscela Peacock (Bottom) Drum: Rochelle Summer Sofa: Audette Denim  
Cushions left to right: Monique Blush/Raspberry, Miscela Multi, Audette Citron, Brigitte Summer, Monique Summer



Drapes: Monique Blush/Raspberry Footstool: Audette Blush  
\*Rugs supplied by Asiatic.co.uk



Pavilion Collection



MONIQUE Summer F1555/05



AUDETTE Citron F1553/02



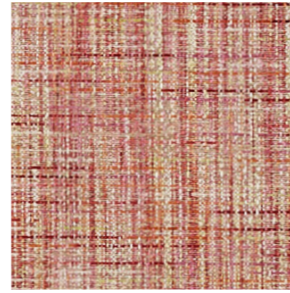
BRIGITTE Summer F1554/05



AUDETTE Denim F1553/03



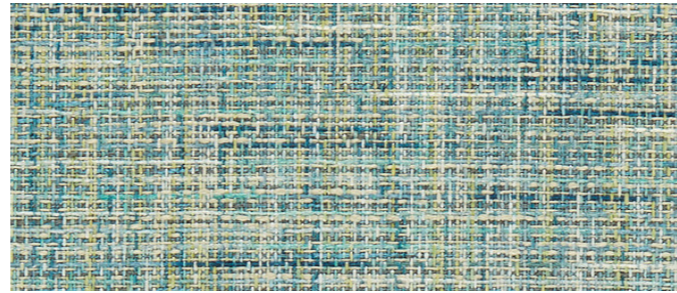
ROCHELLE  
Summer  
F1556/05



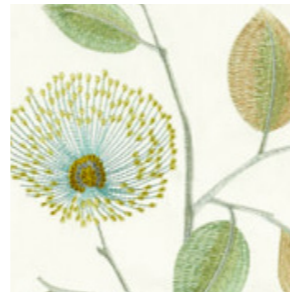
MISCELA  
Multi  
F1242/03



BRIGITTE  
Apple/Mineral  
F1554/01



MISCELA  
Peacock  
F1242/05



MONIQUE  
Apple/Mineral  
F1555/01



ROCHELLE  
Apple/Mineral  
F1556/01



BRIGITTE  
Blush  
F1554/02



AUDETTE  
Blush  
F1553/01



MISCELA  
Stone  
F1242/06



ROCHELLE  
Pewter/Chartreuse  
F1556/03



MONIQUE  
Spice  
F1555/04



MISCELA  
Natural  
F1242/04



ROCHELLE  
Blush/Raspberry  
F1556/02



MONIQUE  
Natural/Pewter  
F1555/03



BRIGITTE  
Spice  
F1554/04



AUDETTE  
Linen  
F1553/04



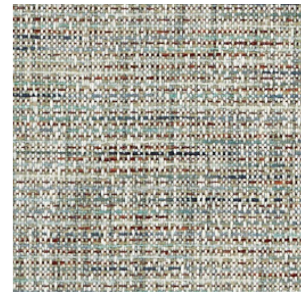
MONIQUE  
Blush/Raspberry  
F1555/02



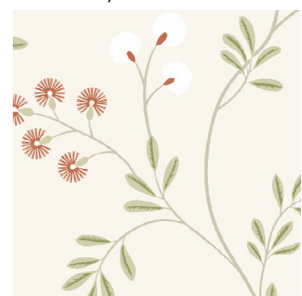
BRIGITTE  
Pewter/Chartreuse  
F1554/03



AUDETTE  
Pewter  
F1553/06

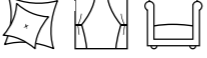




MISCELA  
Kingfisher  
F1242/02



ROCHELLE  
Spice  
F1556/04



End Use Endnutzeranwendung Uso final Usage Applicazioni		Brigitte, Monique & Rochelle: 		Care Instructions Pflegehinweise Indicaciones para el cuidado		Composition Zusammensetzung Composición Composition Composizione	COT - Cotton - Baumwolle - Algodón - Coton - Cotone PES - Polyester - Polyester - Poliéster - Poliestere - Poliestere VI - Viscose - Viskose - Viscosa - Viscose - Viscosa		
		Audette & Miscela: 		Instructions d'entretien Istruzioni per la cura					
Design Design Diseño Tissu Linea	Colours Farben Colores Couleurs Colori	Vertical Repeat Senkrechter Musterrapport Repetición vertical Motif vertical Ripetizione verticale	Horizontal Repeat Waagerechter Musterrapport Repetición horizontal Motif horizontal Ripetizione orizzontal	Fabric Width Breite Anchura Largeur Larghezza tessuto	Weight Gewicht Peso Poids Peso	Composition Zusammensetzung Composición Composition Composizione	Martindale Abrasion Martindale-Abriebtest Abrasión Martindale Abrasion de Martindale Resistenza all'abrasione- Martindale	FR Specification Brandschutzspezifikation Especificación ignifuga Spécifications ignifuges Specifica FR	
Audette	6	32.5cm (12 13/16")	33cm (13")	132cm (52")	410g/m <sup>2</sup> (12.09oz/yd <sup>2</sup> )	88% PES, 12% COT	25 000	*Meets when treated: Domestic Upholstery & Contract Curtain Standards.	
Brigitte	5	39cm (15 3/8")	64.5cm (25 3/8")	129cm (50 13/16")	335g/m <sup>2</sup> (9.88oz/yd <sup>2</sup> )	83% COT, 13% VI, 4% PES	n/a	*Meets when treated: Contract Curtains.	
Miscela	5	n/a	n/a	137cm (53 15/16")	358g/m <sup>2</sup> (10.56oz/yd <sup>2</sup> )	86% PES, 8% COT, 6% VI	50 000+	*Meets when treated: Domestic Upholstery, Contract Curtains, Contract Upholstery, USA and IMO Standards.	
Monique	5	38cm (14 15/16")	64.5cm (25 3/8")	129cm (50 13/16")	349g/m <sup>2</sup> (10.29oz/yd <sup>2</sup> )	75% COT, 18% VI, 7% PES	n/a	*Meets when treated: Contract Curtains.	
Rochelle	5	38.5cm (15 3/16")	43cm (16 15/16")	129cm (50 13/16")	335g/m <sup>2</sup> (9.88oz/yd <sup>2</sup> )	77% COT, 16% VI, 7% PES	n/a	*Meets when treated: Contract Curtains.	



## Lazio Collection

Introducing our first 100% linen collection. Available in 30 colours with a soft handle, Lazio is perfect for all drapery and upholstery needs. This durable linen fabric brings a relaxed and tranquil setting to any home.

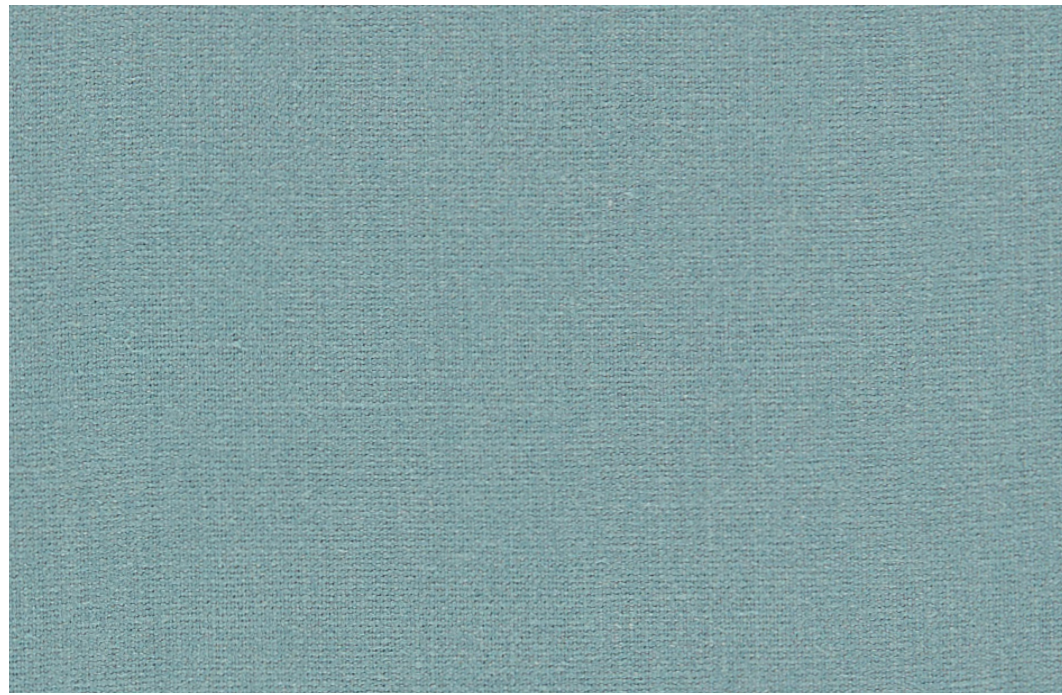


Available in 30 Colours

Drape: Linen Cushions left to right: Linen, Ivory, Storm, Silver, Cloud  
Throw: Antique Sofa: Birch (Floor) Cushion: Birch



LAZIO Collection



LAZIO Storm F1537/30



LAZIO Nordic F1537/23



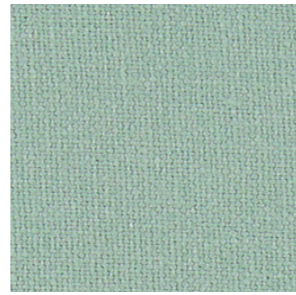
LAZIO Midnight F1537/22



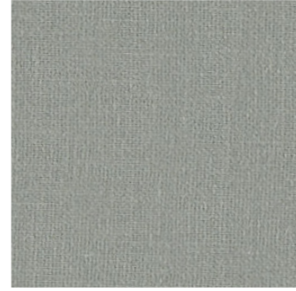
LAZIO Denim F1537/11



LAZIO Delft F1537/10



LAZIO  
Cloud  
F1537/08



LAZIO  
Ash  
F1537/02



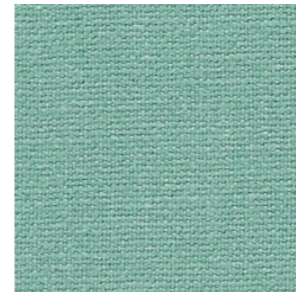
LAZIO  
Charcoal  
F1537/07



LAZIO  
Birch  
F1537/04



LAZIO  
Spice  
F1537/28



LAZIO  
Eau De Nil  
F1537/13



LAZIO  
Dove  
F1537/12



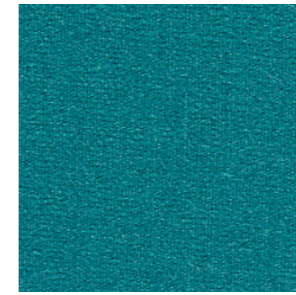
LAZIO  
Polar  
F1537/24



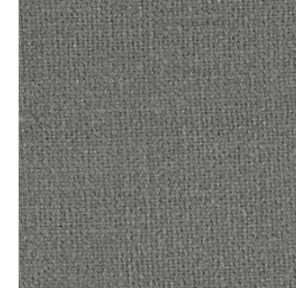
LAZIO  
Feather  
F1537/14



LAZIO  
Cranberry  
F1537/09



LAZIO  
Kingfisher  
F1537/20



LAZIO  
Steel  
F1537/29



LAZIO  
Ivory  
F1537/19



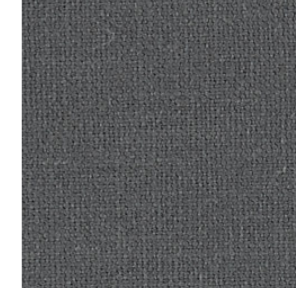
LAZIO  
Buff  
F1537/06



LAZIO  
Bay  
F1537/03



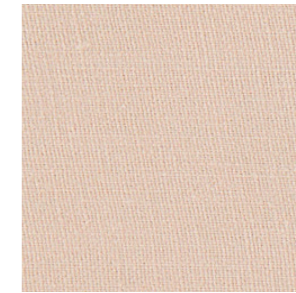
LAZIO  
Silver  
F1537/27



LAZIO  
Graphite  
F1537/16



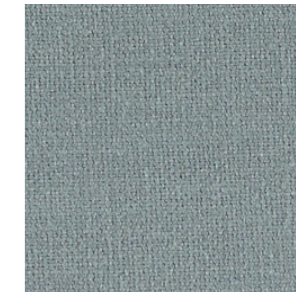
LAZIO  
Putty  
F1537/25



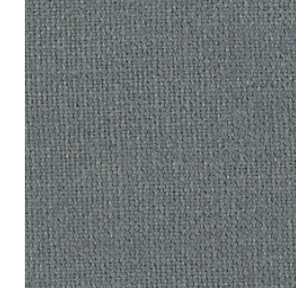
LAZIO  
Blush  
F1537/05



LAZIO  
Herb  
F1537/18



LAZIO  
Shale  
F1537/26



LAZIO  
Gunmetal  
F1537/17



LAZIO  
Linen  
F1537/21

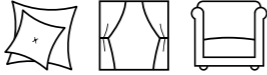



LAZIO  
Antique  
F1537/01



LAZIO  
Forest  
F1537/15



End Use Endnutzeranwendung Uso final Usage Applicazioni			Care Instructions Pflegehinweise Indicaciones para el cuidado Instructions d'entretien Istruzioni per la cura		Composition Zusammensetzung Composición Composition Composizione	100% Linen - Leinen - Lino - Lin - Lino
Design Design Diseño Tissu Linea	Colours Farben Colores Couleurs Colori	Fabric Width Breite Anchura Largeur Larghezza tessuto	Weight Gewicht Peso Poids Peso	Martindale Abrasion Martindale-Abriebtest Abrasión Martindale Abrasion de Martindale Resistenza all'abrasion Martindale	FR Specification Brandschutzspezifikation Especificación ignífuga Spécifications ignifuges Specifica FR	
Lazio	30	138cm (54 <sup>5</sup> / <sub>16</sub> "	293g/m <sup>2</sup> (8.64oz/yd <sup>2</sup> )	18 000 Meets 30 000 rubs with the addition of FR backcoat.	*Meets when treated: Domestic Upholstery.	





Drape: Thornton Denim  
 Cushions left to right: Thornton Denim, Rowland Denim, Cranberry, Malone Linen  
 Sofa: Malone Denim  
 Footstool: Rowland Cranberry  
 Chair front: Rowland Linen back: Anderson Midnight

## Burlington FR Collection

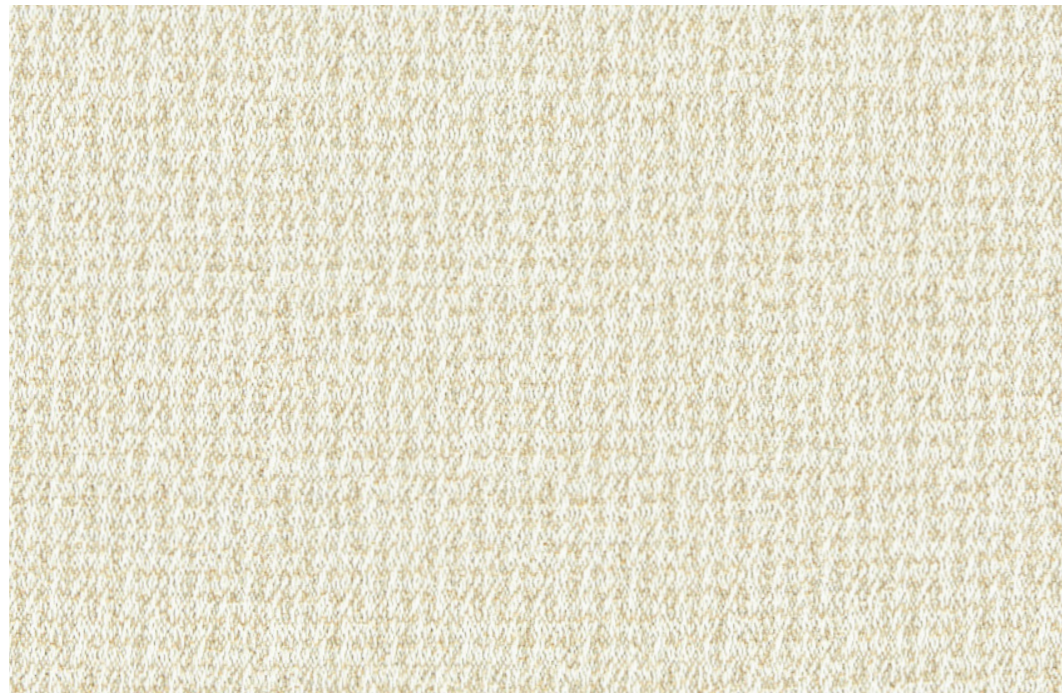
Drawing inspiration from the historic Burlington Street in London, home to Savile Row, this collection offers a tailored experience across a wide fabric selection. With a distinguished wool feel on a range of brushed decorative weaves, Burlington is a sleek compendium of staple plains, stripes and checks. Brand-new designs are washable and 100% fire retardant for maximum durability and suitability across all contract requirements.



(Top left) Various designs and colours (Top right) Armchairs: Thornton Olive & Malone Moss  
 Cushions left to right: Rowland Turmeric, Olive, Thornton Moss  
 Drape: Thornton Moss  
 Footstool: Rowland Olive (Bottom) Drape: Thornton Pebble  
 Headboard: Malone Charcoal  
 Cushions: Thornton Pebble & Rowland Turmeric  
 Throw: Bowmont Charcoal  
 Bench: Rowland Pebble



Burlington FR Collection



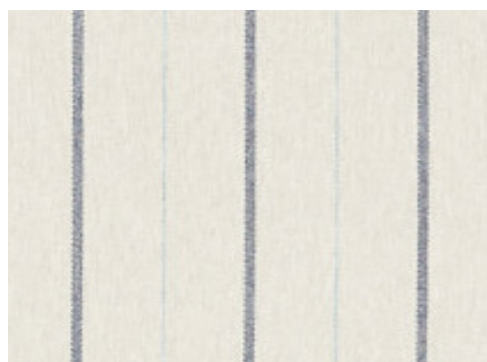
MALONE Linen F1569/04



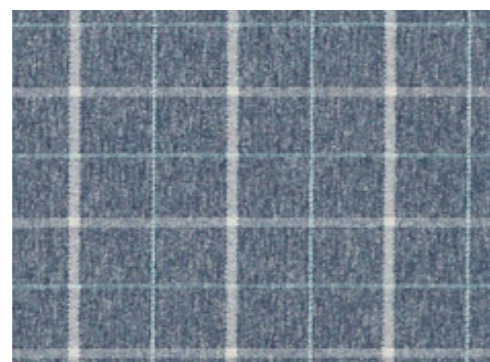
ANDERSON Midnight F1567/03



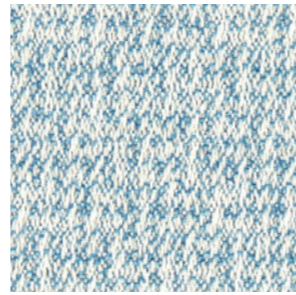
ROWLAND Midnight F1570/06



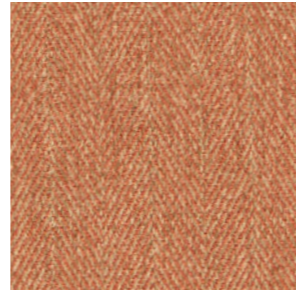
BOWMONT Denim F1568/03



THORNTON Midnight F1571/03



MALONE  
Denim  
F1569/03



ROWLAND  
Turmeric  
F1570/11



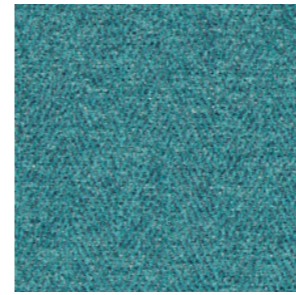
BOWMONT  
Charcoal  
F1568/01



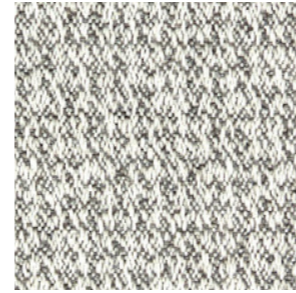
THORNTON  
Flax  
F1571/02



ROWLAND  
Denim  
F1570/03



ROWLAND  
Teal  
F1570/10



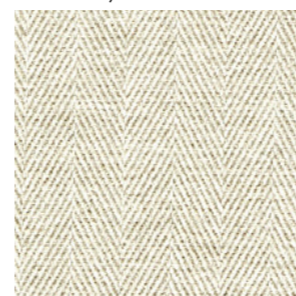
MALONE  
Silver  
F1569/06



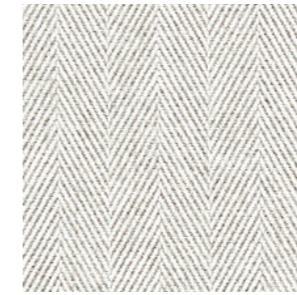
ROWLAND  
Olive  
F1570/08



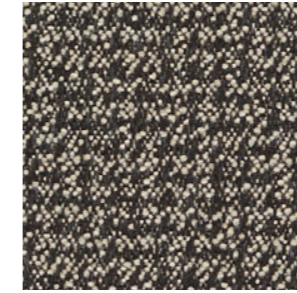
THORNTON  
Moss  
F1571/04



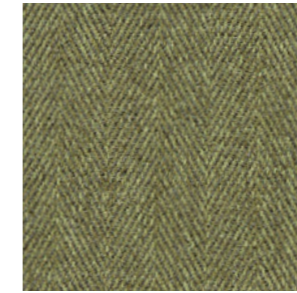
ROWLAND  
Linen  
F1570/05



ROWLAND  
Pebble  
F1570/09



MALONE  
Charcoal  
F1569/01



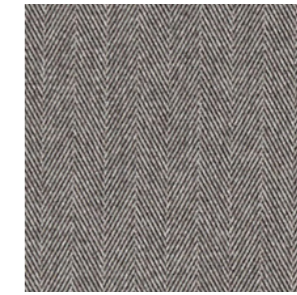
ROWLAND  
Moss  
F1570/07



THORNTON  
Olive  
F1571/05



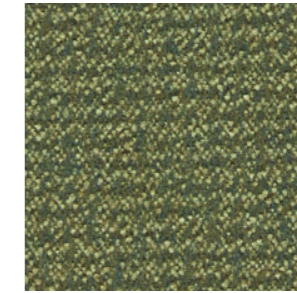
THORNTON  
Denim  
F1571/01



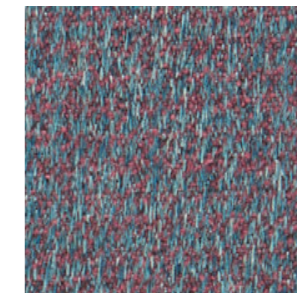
ROWLAND  
Charcoal  
F1570/01



THORNTON  
Pebble  
F1571/06



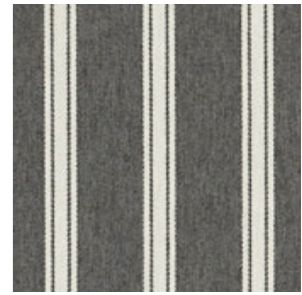
MALONE  
Moss  
F1569/05



MALONE  
Cranberry  
F1569/02



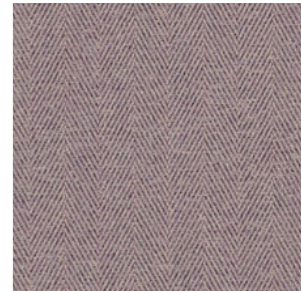
BOWMONT  
Cranberry  
F1568/02



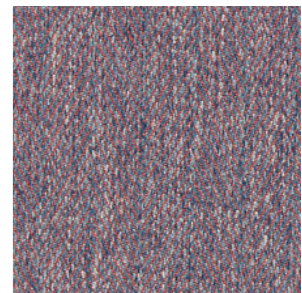
ANDERSON  
Charcoal  
F1567/01



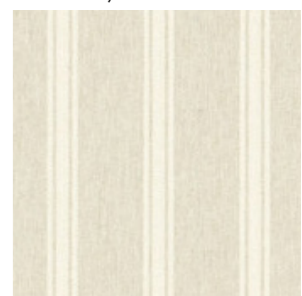
THORNTON  
Silver  
F1571/07



ROWLAND  
Heather  
F1570/04

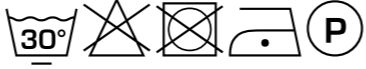


ROWLAND  
Cranberry  
F1570/02



ANDERSON  
Linen  
F1567/02



End Use Endnutzeranwendung Usó final Usage Applicazioni				Care Instructions Pflegehíweise Indicaciones para el cuidado Instructions d'entretien Istruzioni per la cura			Composition Zusammensetzung Composici3n Composizione	 100% FR Polyester - Flammhemmendes Polyester - Poliéster FR - Polyester ignífuge - Poliestere FR
Design Design Diseño Tissu Linea	Colours Farben Colores Couleurs Colori	Vertical Repeat Senkrechter Musterrapport Repetici3n vertical Motif vertical Ripetizione verticale	Horizontal Repeat Waagerechter Musterrapport Repetici3n horizontal Motif horizontal Ripetizione orizzontal	Fabric Width Breite Anchura Largeur Larghezza tessuto	Weight Gewicht Peso Poids Peso	Martindale Abrasion Martindale-Abriebtest Abrasi3n Martindale Abrasion de Martindale Resistenza all'abrasione- Martindale	FR Specification Brandschutzspezifikation Especificaci3n ignífuga Spécificati3n ignífuges Specifica FR	
Anderson	3	n/a	6cm (2 3/8")	144cm (56 1/16")	427g/m <sup>2</sup> (12.59oz/yd <sup>2</sup> )	40 000	 Meets untreated: Domestic Upholstery, CAL 117, Contract Curtains, Contract Bedspreads, IMO Drapery, IMO Upholstery.  *Meets when treated: Crib 5.	
Bowmont	3	n/a	8cm (3 1/8")	144cm (56 1/16")	427g/m <sup>2</sup> (12.59oz/yd <sup>2</sup> )	40 000		
Malone	6	6cm (2 3/8")	2cm (1 3/16")	143cm (56 5/16")	431g/m <sup>2</sup> (12.71oz/yd <sup>2</sup> )	40 000		
Rowland	11	n/a	3cm (1 3/16")	143cm (56 5/16")	427g/m <sup>2</sup> (12.59oz/yd <sup>2</sup> )	40 000		
Thornton	7	7.5cm (2 15/16")	8cm (3 1/8")	144cm (56 1/16")	427g/m <sup>2</sup> (12.59oz/yd <sup>2</sup> )	40 000		



## Country Escape Collection

Invite the great outdoors inside this season, with Country Escape. Painterly rural scenes accompany playful woodland creatures, bringing the best of the countryside to your home. Offering a range of fabric qualities including fabulous linen-look and cotton grounds, as well as velvets and jacquards, Country Escape introduces an authentic rustic feel for your modern country scheme. Also available as oilcloth (PVC coated).



(Top left) Drape: Tatton Autumn Headboard: Rosedene Raspberry/Ochre Cushion & Throw: Croft Ochre  
 (Top right) Bench: Tatton Multi Cushions left to right: Croft Denim, New Grove Multi, Rosedene Denim/Spice, Tatton Forest, Croft Mineral (Bottom) Drapes: Tatton Midnight Sofa: Rosedene Denim/Spice Cushions left to right: Renzo Midnight, Ochre



Sofa: Croft Mineral Cushions: Croft Mineral, New Grove Multi  
 Drapes: Gawthorpe Multi



Country Escape Collection



TATTON Midnight F1562/03



FOXBURY Spice F1557/02



ROSEDENE Mineral F1539/04



GAWTHORPE  
Forest/Linen  
F1558/02



TATTON  
Multi  
F1563/02



NEW GROVE  
Autumn  
F1560/01



CROFT  
Charcoal  
F1538/01



CROFT  
Denim  
F1538/02



NEW GROVE  
Mineral/Spice  
F1560/03



CROFT  
Linen  
F1538/03



CROFT  
Ochre  
F1538/05



GAWTHORPE  
Charcoal  
F1559/01



NEW GROVE  
Denim/Citrus  
F1560/02



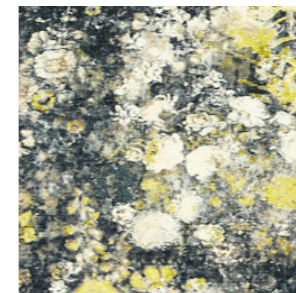
CROFT  
Mineral  
F1538/04



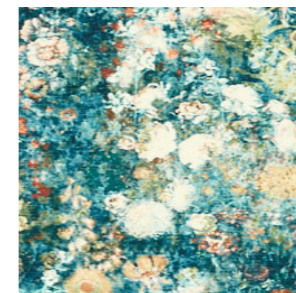
NEW GROVE  
Multi  
F1561/01



ROSEDENE  
Raspberry/Ochre  
F1539/05



ROSEDENE  
Charcoal/Chartreuse  
F1539/01



ROSEDENE  
Denim/Spice  
F1539/02



TATTON  
Spice/Linen  
F1562/05



GAWTHORPE  
Multi  
F1559/02



GAWTHORPE  
Autumn  
F1559/01



FOXBURY  
Charcoal  
F1557/01



GAWTHORPE  
Mineral/Linen  
F1558/03



ROSEDENE  
Forest  
F1539/03



TATTON  
Forest  
F1562/02



TATTON  
Autumn  
F1562/01




TATTON  
Charcoal  
F1563/01



TATTON  
Mineral  
F1562/04



**Country Escape Collection**  
Technical Information

End Use Endnutzeranwendung Usos final Usage Applicazioni	Rosedene: 	Care Instructions Pfleheinweise Indicaciones para el cuidado Instructions d'entretien Istruzioni per la cura	Croft:		Composition Zusammensetzung Composición Composizione	COT - Cotton - Baumwolle - Algodón - Coton - Cotone PES - Polyester - Polyester - Poliéster - Poliestere - Poliestere LI - Linen - Leinen - Lino - Lin - Lino
	All other designs: 		Rosedene:			
			All other designs:			

Design Design Diseño Tissu Linea	Vertical Repeat Senkrechter Musterrapport Repetición vertical Motif vertical Ripetizione verticale	Horizontal Repeat Waagerechter Musterrapport Repetición horizontal Motif horizontal Ripetizione orizzontal	Fabric Width Breite Anchura Largeur Larghezza tessuto	Weight Gewicht Peso Poids Peso	Composition Zusammensetzung Composición Composizione	Martindale Abrasion Martindale-Abriebtest Abrasion Martindale Abrasion de Martindale Resistenza all'abrasione- Martindale	FR Specification Brandschutzspezifikation Especificación ignífuga Spécifications ignifuges Specifica FR
Croft (all colours)	66cm (26")	35cm (13 3/4")	140cm (55 1/8")	290g/m <sup>2</sup> (8.55oz/yd <sup>2</sup> )	89% PES, 7% COT, 4% LI	20 000	*Meets when treated: Domestic Upholstery, Contract Upholstery & Contract Curtain Standards.
Foxbury (all colours)	10.5cm (4 1/8")	17cm (6 1/16")	137cm (53 15/16")	207g/m <sup>2</sup> (6.11oz/yd <sup>2</sup> )	80% COT, 20% PES	20 000	Meets untreated: BS5852 Source 0. *Meets when treated: Domestic Upholstery, Contract Upholstery and Contract Curtain Standards.
Gawthorpe Autumn	45cm (17 3/4")	45.5cm (17 15/16")	137cm (53 15/16")	207g/m <sup>2</sup> (6.11oz/yd <sup>2</sup> )	80% COT, 20% PES	20 000	
Gawthorpe Forest/Linen	45cm (17 3/4")	45.5cm (17 15/16")	137cm (53 15/16")	207g/m <sup>2</sup> (6.11oz/yd <sup>2</sup> )	80% COT, 20% PES	20 000	
Gawthorpe Mineral/Linen	45cm (17 3/4")	45.5cm (17 15/16")	137cm (53 15/16")	207g/m <sup>2</sup> (6.11oz/yd <sup>2</sup> )	80% COT, 20% PES	20 000	
Gawthorpe Charcoal	45cm (17 3/4")	45.5cm (17 15/16")	137cm (53 15/16")	231g/m <sup>2</sup> (6.81oz/yd <sup>2</sup> )	100% COT	18 000	
Gawthorpe Multi	45cm (17 3/4")	45.5cm (17 15/16")	137cm (53 15/16")	231g/m <sup>2</sup> (6.81oz/yd <sup>2</sup> )	100% COT	18 000	
New Grove Autumn	32.5cm (12 13/16")	32.2cm (12 11/16")	137cm (53 15/16")	231g/m <sup>2</sup> (6.81oz/yd <sup>2</sup> )	100% COT	18 000	
New Grove Denim/Citrus	32.5cm (12 13/16")	32.2cm (12 11/16")	137cm (53 15/16")	231g/m <sup>2</sup> (6.81oz/yd <sup>2</sup> )	100% COT	18 000	
New Grove Mineral/Spice	32.5cm (12 13/16")	32.2cm (12 11/16")	137cm (53 15/16")	231g/m <sup>2</sup> (6.81oz/yd <sup>2</sup> )	100% COT	18 000	
New Grove Multi	32.5cm (12 13/16")	32.2cm (12 11/16")	137cm (53 15/16")	207g/m <sup>2</sup> (6.11oz/yd <sup>2</sup> )	80% COT, 20% PES	20 000	
Rosedene (all colours)	50.8cm (20")	34.2cm (13 7/16")	137cm (53 15/16")	277g/m <sup>2</sup> (8.17oz/yd <sup>2</sup> )	100% PES	100 000	*Meets when treated: Domestic Upholstery. For Contract Upholstery FR treatment and the use of an interliner are required. Not suitable for Contract Curtain treatment.
Tatton Autumn	62.5cm (24 5/8")	137cm (53 15/16")	137cm (53 15/16")	207g/m <sup>2</sup> (6.11oz/yd <sup>2</sup> )	80% COT, 20% PES	20 000	Meets untreated: BS5852 Source 0. *Meets when treated: Domestic Upholstery, Contract Upholstery and Contract Curtain Standards.
Tatton Forest	62.5cm (24 5/8")	137cm (53 15/16")	137cm (53 15/16")	207g/m <sup>2</sup> (6.11oz/yd <sup>2</sup> )	80% COT, 20% PES	20 000	
Tatton Midnight	62.5cm (24 5/8")	137cm (53 15/16")	137cm (53 15/16")	207g/m <sup>2</sup> (6.11oz/yd <sup>2</sup> )	80% COT, 20% PES	20 000	
Tatton Mineral	62.5cm (24 5/8")	137cm (53 15/16")	137cm (53 15/16")	207g/m <sup>2</sup> (6.11oz/yd <sup>2</sup> )	80% COT, 20% PES	20 000	
Tatton Spice/Linen	62.5cm (24 5/8")	137cm (53 15/16")	137cm (53 15/16")	207g/m <sup>2</sup> (6.11oz/yd <sup>2</sup> )	80% COT, 20% PES	20 000	
Tatton Charcoal	62.5cm (24 5/8")	137cm (53 15/16")	137cm (53 15/16")	231g/m <sup>2</sup> (6.81oz/yd <sup>2</sup> )	100% COT	18 000	
Tatton Multi	62.5cm (24 5/8")	137cm (53 15/16")	137cm (53 15/16")	231g/m <sup>2</sup> (6.81oz/yd <sup>2</sup> )	100% COT	18 000	





Sofa: Astral Peacock Cushions left to right: Nexus Midnight, Hexa Taupe, Nexus Smoke, Astral Taupe  
Drape: Hexa Smoke Drum top: Astral Gold side: Nexus Gold

## Illusion Collection

Illusion's three iconic embossed velvets and nine shimmering colourways are perfect for making a statement in this dual-purpose collection. The vivid tones of teal and taupe sit perfectly alongside moodier hues such as peacock and midnight, making Illusion as versatile as it is intriguing.



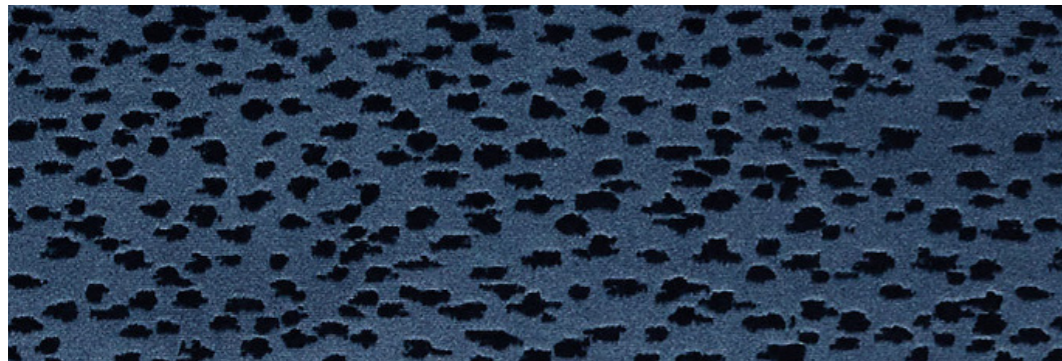
(Top) Cushion floor: Hexa Gold Chair: Astral Stone Cushion: Nexus Midnight Drape: Nexus Gold (Bottom left) Cushions top to bottom: Nexus Smoke, Peacock, Stone, Hexa Peacock, Gold, Astral Espresso Bench: Nexus Teal Cushions continued: Astral Stone, Teal, Nexus Stone, Hexa Midnight (Bottom right) Lengths: Hexa Smoke, Nexus Taupe, Astral Stone



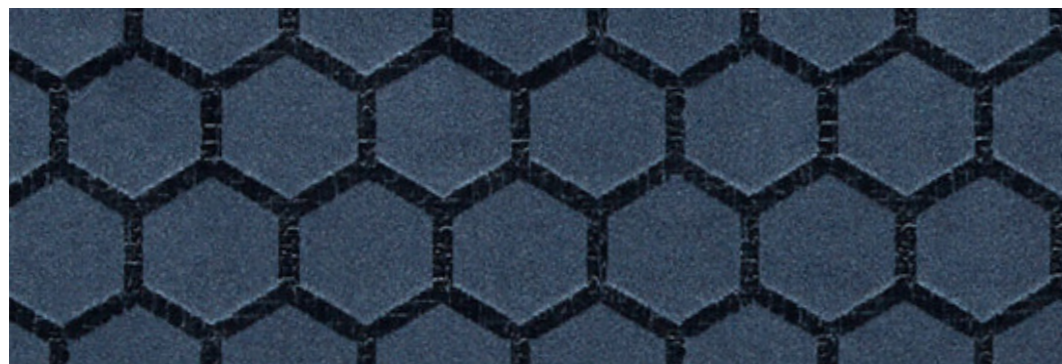
Illusion Collection



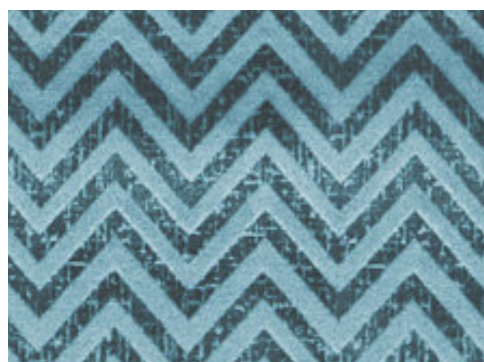
NEXUS Midnight F1566/04



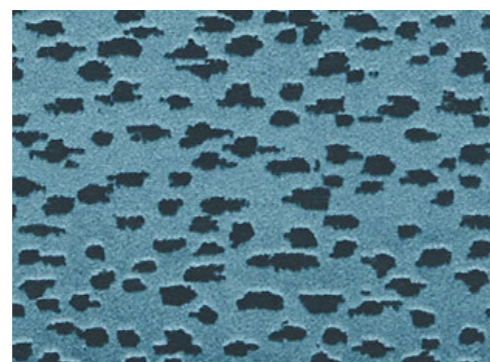
ASTRAL Midnight F1564/04



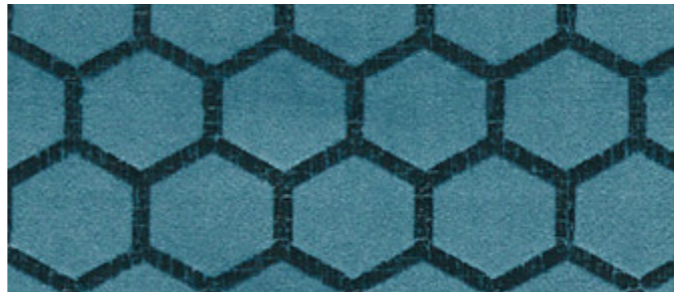
HEXA Midnight F1565/04



NEXUS Teal F1566/09



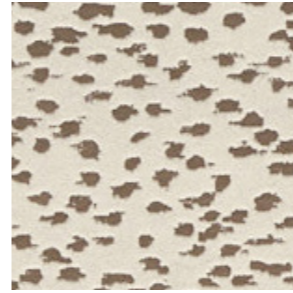
ASTRAL Teal F1564/09



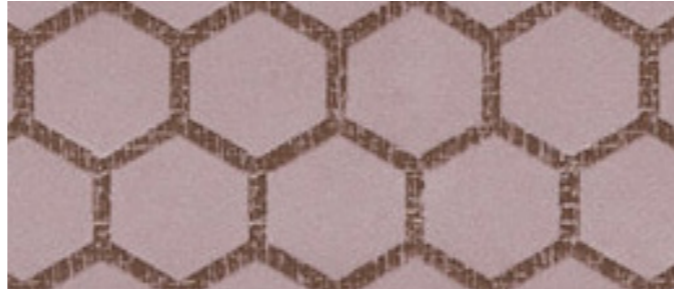
HEXA  
Teal  
F1565/09



NEXUS  
Stone  
F1566/07



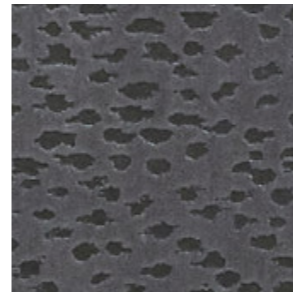
ASTRAL  
Stone  
F1564/07



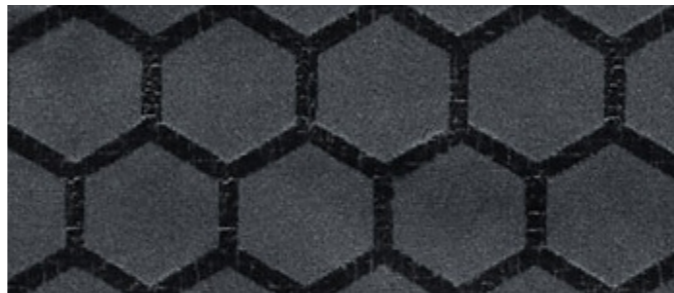
HEXA  
Heather  
F1565/03



NEXUS  
Smoke  
F1566/06



ASTRAL  
Smoke  
F1564/06



HEXA  
Espresso  
F1565/01



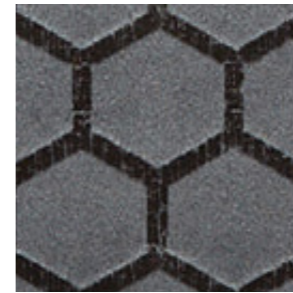
NEXUS  
Peacock  
F1566/05



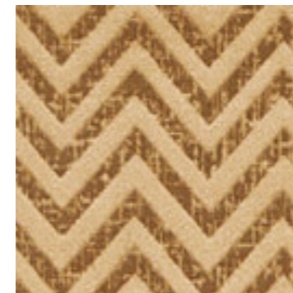
HEXA  
Stone  
F1565/07



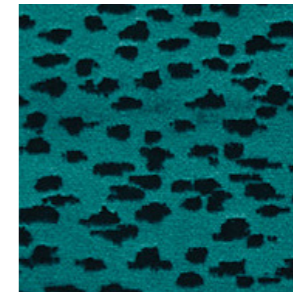
NEXUS  
Taupe  
F1566/08



HEXA  
Smoke  
F1565/06



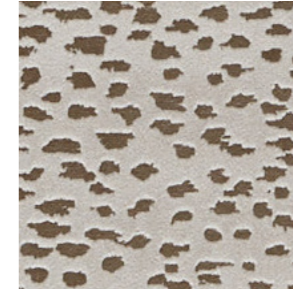
NEXUS  
Gold  
F1566/02



ASTRAL  
Peacock  
F1564/05



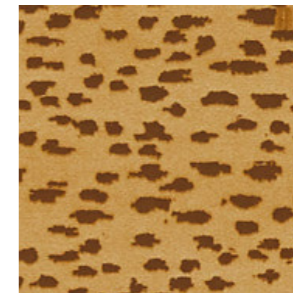
NEXUS  
Heather  
F1566/03



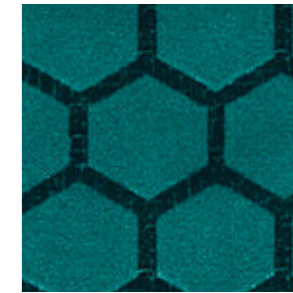
ASTRAL  
Taupe  
F1564/08



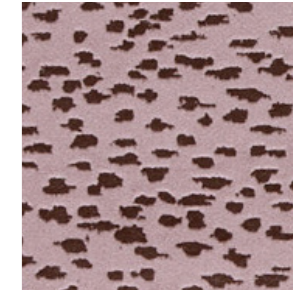
NEXUS  
Espresso  
F1566/01



ASTRAL  
Gold  
F1564/02



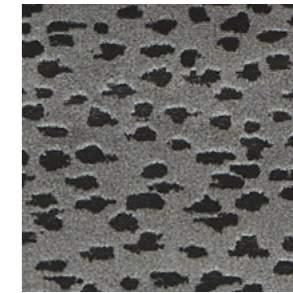
HEXA  
Peacock  
F1565/05



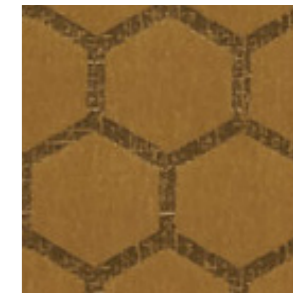
ASTRAL  
Heather  
F1564/03



HEXA  
Taupe  
F1565/08



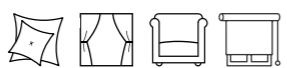
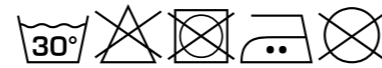
ASTRAL  
Espresso  
F1564/01



HEXA  
Gold  
F1565/02



**Illusion Collection**  
**Technical Information**

End Use Endnutzeranwendung Usó final Usage Applicazioni				Care Instructions Pflegehíweise Indicaciones para el cuidado Instructions d'entretien Istruzioni per la cura	 Iron on reverse	Composition Zusammensetzung Composici3n Composizione	100% - Polyester - Polyester - Poli3ster - Poliestere - Poliestere
Design Design Diseño Tissu Linea	Colours Farben Colores Couleurs Colori	Vertical Repeat Senkrechter Musterrapport Repetici3n vertical Motif vertical Ripetizione verticale	Horizontal Repeat Waagerechter Musterrapport Repetici3n horizontal Motif horizontal Ripetizione orizzontal	Fabric Width Breite Anchura Largeur Larghezza tessuto	Weight Gewicht Peso Poids Peso	Martindale Abrasion Martindale-Abriebtest Abrasión Martindale Abrasion de Martindale Resistenza all'abrasione- Martindale	FR Specification Brandschutzspezifikation Especificaci3n ignífuga Sp3cificacions ignífugas Specifica FR
Astral	9	31cm (12 <sup>3</sup> / <sub>16</sub> "	35.5cm (14")	142cm (55 <sup>15</sup> / <sub>16</sub> "	300g/m <sup>2</sup> (8.85oz/yd <sup>2</sup> )	50 000	*Meets when treated: Domestic Upholstery, Contract Curtains, Contract Upholstery (interliner required).
Hexa	9	6.8cm (2 <sup>11</sup> / <sub>16</sub> "	4.3cm (1 <sup>11</sup> / <sub>16</sub> "	142cm (55 <sup>15</sup> / <sub>16</sub> "	300g/m <sup>2</sup> (8.85oz/yd <sup>2</sup> )	50 000	*Meets when treated: Domestic Upholstery, Contract Curtains, Contract Upholstery (interliner required).
Nexus	9	1.5cm (16 <sup>9</sup> / <sub>16</sub> "	4.3cm (1 <sup>11</sup> / <sub>16</sub> "	142cm (55 <sup>15</sup> / <sub>16</sub> "	300g/m <sup>2</sup> (8.85oz/yd <sup>2</sup> )	50 000	*Meets when treated: Domestic Upholstery, Contract Curtains, Contract Upholstery (interliner required).