



CLARKE & CLARKE  
METROPOLITAN

DIGITAL DESIGN BOOK



# CLARKE & CLARKE

## METROPOLITAN

---

**Playing on the rhythms of an urban landscape, Metropolitan is a wallpaper and fabric collection that expresses the grit and glamour of a city in dynamism.**

---

Playing on the rhythms of an urban landscape, Metropolitan is a wallpaper and fabric collection that expresses the grit and glamour of a city in dynamism.

Drawing upon the influences of 20th century artists working in abstraction, find with Metropolitan a swathe of swirls and explosive brush marks across noir and monochromatic colourways to dramatic effect.

Metropolitan is texturally expressive and visually dynamic. Wallpapers featuring matte, textured finishes are complemented by glints of glamour with shimmering pearlescent micas and metallic flecks to finish.

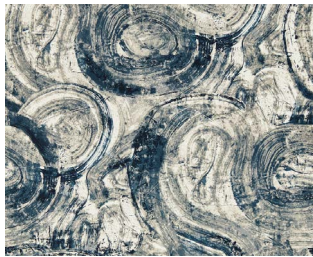
Metropolitan fabrics continues this beautifully expressive tactility. There's a chunky sense of weightiness - twisted decorative yarns, highly textured jacquard fabrics, raised chenille, and cut velvets with dramatic piles.

"The collection was born from a desire to capture the fluid, changing nature of the urban environment. We wanted pieces that brought impact into a space, that feels immersive, where the texture and movement tell a story. One of these pieces especially was our wallpaper Dynamic, which is designed to feel more like an artistic mural, with expressive long, loose brush marks and meditative abstract shapes that invite longer viewing." Jayne Wilson, lead designer at Clarke & Clarke.

This return to a monochrome colouring, where everything is stripped back to simple abstract shapes creates the look and feel of contemporary artistic living, adding a sense of sophistication and bohemianism to interiors.

## DYNAMIC

Painterly, fluid, rhythmic, Dynamic is made up of expressive long, loose brush marks and meditative abstract shapes that invite longer viewing. This design could be interpreted as loose organic forms of waves breaking into each other, equally it could evoke the frenetic pace of a city in modernity. The choice is up to you. Printed onto a dry fibrous non-woven paper, Dynamic's textural quality underscores the energy of the mark-making process, making this design feel more like an artwork on the wall. As a design, it repeats, so the linework and shapes of Dynamic can be truly immersive.



HATOU M

F1769/01



HERRERA

W0223/01



DYNAMIC

W0231/01



Click on the product images to discover more.



## JUNO

With blocks, lines, rectangles of varied widths and sizes, Juno's tessellating structures gives the impression of a cityscape in motion. This dual-purpose fabric is highly textural and tactile, with a feel of chunkiness weightiness with decorative yarns twisted in. With a high Martindale score, Juno performs excellently both visually and practically for both hospitality and private dwellings. A matching wallpaper is available.



JUNO

F1767/02



ORTEGA

F1776/01



HOLZER

F1775/01

[Click on the product images to discover more.](#)

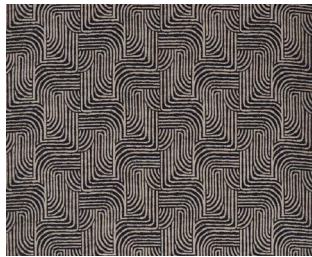
## MALEVICH

Immerse yourself in the beautiful swoosh of a brush mark. Drawing upon the art historical roots of abstraction, Malevich, with its bold, daring dance of a paint brush evokes a sense of motion, adding sophistication to any interior. Each colourway is beautifully highlighted by metallic and mica flicks. The Linen colourway is finished with a subtle mica sheen and Noir with a polished metallic. Malevich also comes in a coordinating fabric.



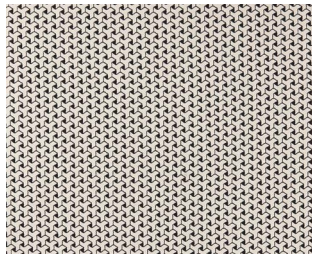
MALEVICH

W0227/03



GORMLEY

F1766/03



ALBI

F0907/01



[Click on the product images to discover more.](#)



## TARYN

Think pin stripes, but with a smart, rustic charm. Taryn is a textured stripe with raised chenille, composed of 25% linen, making it the ultimate fabric for versatility across residential spaces. A versatile, dual-purpose fabric, Taryn is suitable for upholstery, drapery, and a range of soft furnishings.



TARYN

F1773/03



HOLZER

F0895/01

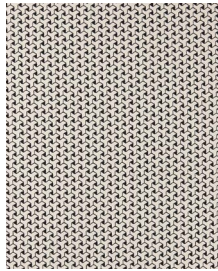


MALEVICH

F1770/03

[Click on the product images to discover more.](#)

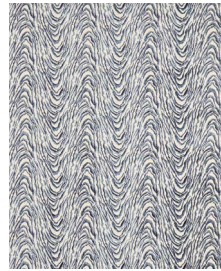
# FABRIC



ALBI F0907/01



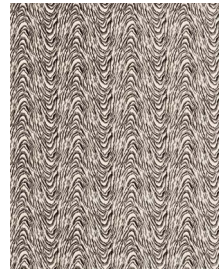
ASRA F0884/01



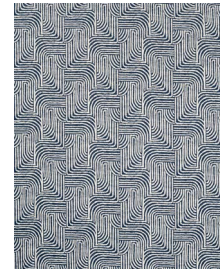
DELVOYE F1765/01



DELVOYE F1765/02



DELVOYE F1765/03



GORMELY F1766/01



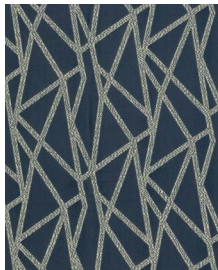
GORMELY F1766/02



GORMELY F1766/03



GORMELY F1766/04



GEOMO F1459/02



GEOMO F1459/04



GEOMO F1459/02



HATOUM F1769/01



HATOUM F1769/02



HATOUM F1769/03



HATOUM F1769/04



HERRERA F1774/01



HERRERA F1774/02



HERRERA F0911/01



HOLZER F1775/01



HOLZER F1775/02



HOLZER F0895/01



JUNO F1767/01



JUNO F1767/02



JUNO F1767/03



JUNO F1767/04



KAZIMIR F1768/01



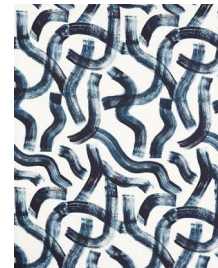
KAZIMIR F1768/02



KAZIMIR F1768/03



LANGEI F1458/04



MALEVICH F1770/01

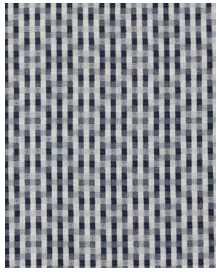


MALEVICH F1770/02

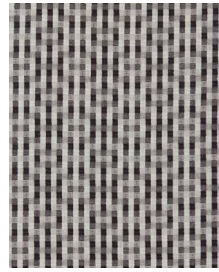
FABRIC CONTINUED



MALEVICH F1770/03



NESHAT F1771/01



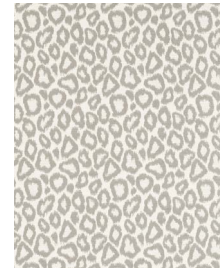
NESHAT F1771/02



ORTEGA F1776/01



ORTEGA F1776/02



ORTEGA F1776/03



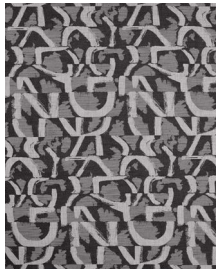
ORTEGA F0912/01



PIERO F1772/01



PIERO F1772/02



PIERO F1772/03



TARYN F1773/01



TARYN F1773/02



TARYN F1773/03



ZEHRAYA F0902/01

WALLPAPER



COSMOPOLIS W0221/01



COSMOPOLIS W0221/02



COSMOPOLIS W0221/03



COSMOPOLIS W0221/04



DYNAMIC W0231/01



DYNAMIC W0231/02



HATOUW W0222/01



HATOUW W0222/02



HATOUW W0222/03



HATOUW W0222/04



HERRERA W0223/01



HERRERA W0223/02



HERRERA W0223/03



JUNO W0224/01



JUNO W0224/02



JUNO W0224/03



# WALLPAPER CONTINUED



KAZIMIR W0225/01



KAZIMIR W0225/02



KAZIMIR W0225/03



KAZIMIR W0225/04



LOXLEY W0226/01



LOXLEY W0226/02



LOXLEY W0226/03



LOXLEY W0226/04



LOXLEY W0226/05



LOXLEY W0226/06



MALEVICH W0227/01



MALEVICH W0227/02



MALEVICH W0227/03



MALEVICH W0227/04



MURAKAMI W0228/01



MURAKAMI W0228/02



MURAKAMI W0228/03



MURAKAMI W0228/04



ORTEGA W0229/01



ORTEGA W0229/02



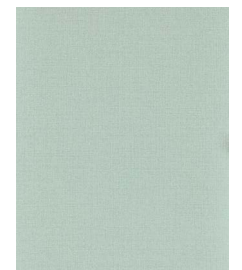
ORTEGA W0229/03



RYMAN W0230/01



RYMAN W0230/02



RYMAN W0230/03



RYMAN W0230/04



RYMAN W0230/05

# CONTACT DETAILS

---

## LONDON SHOWROOM - NEW

Sanderson Design Group  
Unit 23G, Ground Floor, Central Dome,  
Chelsea Harbour Design Centre  
SW10 0XE, London

## NEW YORK SHOWROOM

D&D Building, 979 Third Avenue,  
Suite 905, New York, NY10022  
+1 212 319 7220  
sales-ny@sandersondesigngroup.com

## CHICAGO SHOWROOM

222 W Merchandise Mart Plaza,  
Suite 6-117A, Chicago, IL, 60654  
+1 312 929 2058  
sales-chicago@sandersondesigngroup.com

## GERMANY SHOWROOM

Kronenstrasse 4, 76133 Karlsruhe  
+49 721 981 985 60  
verkauf@sandersondesigngroup.com

## NETHERLANDS SHOWROOM

ETC Licht & Interieur, Randweg 20,  
4104 AC Culemborg  
+31 65349 3696  
international@sandersondesigngroup.com

---

## ABOUT CLARKE & CLARKE

---

Founded in 2009 as the go-to design house defining transitional style in home interiors, Clarke & Clarke offers an eclectic yet distinctive collection of fabrics, wallpapers and home accessories. Born out of a passion for creating beautiful, expressive homes, Clarke & Clarke's spirit and British flair deliver an inclusive sense of glamour for the style conscious. Focusing on luxurious textures and bold colour combinations, Clarke & Clarke's aesthetic runs from whimsical to glamorous and maximalist to sleek, for polished looks embodying British eclecticism.