

CLARKE & CLARKE

EXPRESSIONS
PERFORMANCE WALLCOVERINGS





CLARKE & CLARKE

EXPRESSIONS

PERFORMANCE WALLCOVERINGS

Expressions is a wallcovering collection packed with sophisticated semi-plain performance vinyls in a sleek colour palette. Wrap interiors in one of Clarke & Clarke's most stylish design stories.

These robust, non-woven vinyl performance wallcoverings are highly durable with exceptional tensile strength.

Designed for superior durability in the most demanding environments, Expressions Wallcoverings are ideal for all design applications. All designs come in wide-width options of 106cm.

Polished and with a touch of glamour, each design takes the elements and etchings of nature and elevates these patterns to new levels. Marbling and wood grain effects are lifted by metallics, referencing nature's imprint, made luxurious in metallic finishes. Night skies and sandy tones are highlighted in the palette for a decadent collection of expressive plains.

Each design has been considered for interpretation between metallic and matte options. From glamorous to natural looking designs, all wallcoverings can be layered to create a textured look.

Marrying style and technical performance, this collection elevates Clarke & Clarke's portfolio to new heights with infinite ways to express yourself through design in Expressions.

CLARKE-CLARKE.SANDERSONDESIGNGROUP.COM

[@CLARKE_CLARKE_INTERIORS](https://www.instagram.com/CLARKE_CLARKE_INTERIORS)



CALACATTA

This sensational digital panel reflects the deeply luxurious marble look on the wall. A textured emboss creates a concrete effect. Repeating indefinitely in every direction, Calacatta is an impactful design for those with bold intentions.



ASPER

Using a string emboss to pick up on the flecked texture of the design, Asper has a vertical slub. The intensity of colour creates visual depth, serving as a sophisticated yet subtle wallcovering.





STRIATUS

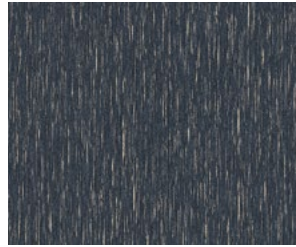
A non-traditional stripe, Striatus bears the markings of rock or sediment layers, depending on the direction in which you hang it. A versatile design, the emboss has a ribbed effect for texture, and the wallcovering can be hung vertically or horizontally.

ASPER

Using a string emboss to pick up on the flecked texture of the design, Asper has a vertical slub. The intensity of colour creates visual depth, serving as a sophisticated yet subtle wallcovering.



CHARCOAL/GILVER
W0205/01 - ZW0205/01



MIDNIGHT
W0205/02 - ZW0205/02



PEBBLE
W0205/03 - ZW0205/03



PUTTY
W0205/04 - ZW0205/04



SAHARA
W0205/05 - ZW0205/05

FOLIUS

The skeleton of a leaf, layered and flipped, can be seen on Folius. It is subtle, almost delicate, yet with a dimensional quality in the layers of tones. A fibrous emboss on the design adds to its naturalistic quality.



CHARCOAL/GILVER
W0206/01 - ZW0206/01



LINEN
W0206/02 - ZW0206/02



MIDNIGHT
W0206/03 - ZW0206/03



PUTTY
W0206/04 - ZW0206/04



SAHARA
W0206/05 - ZW0206/05

LAVATUS

A brushed block effect reveals itself in Lavatus as if a comb has been dragged in short bursts across the vinyl, creating organic squares with delicate score marks. The cotton effect emboss adds lovely texture, and a metallic option adds a slight shimmer and shine.



ASH
W0207/01 - ZW0207/01



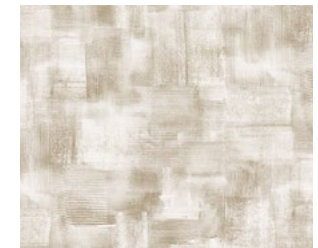
DOVE
W0207/02 - ZW0207/02



LINEN
W0207/03 - ZW0207/03



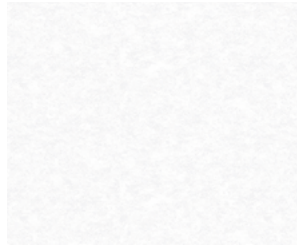
MIDNIGHT
W0207/04 - ZW0207/04



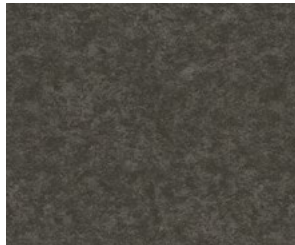
PUTTY
W0207/05 - ZW0207/05

MARMOR

This wonderfully subtle texture is a backdrop design for interior schemes. Slightly industrial, the intensity of the effect is enhanced in different colourways. An organic stone appearance, Marmor wows without structure and has the look of sheet metal when featured in a metallic colourway.



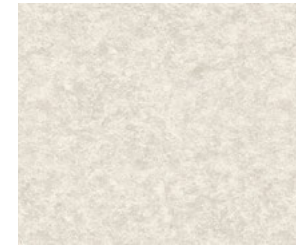
ASH
W0208/01- ZW0208/01



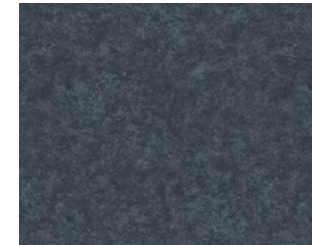
CHARCOAL
W0208/02- ZW0208/02



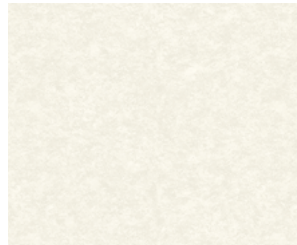
CHARCOAL/GILVER
W0208/03- ZW0208/03



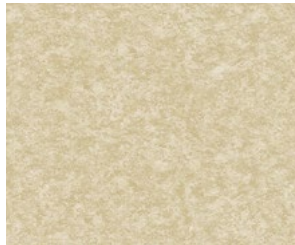
LINEN
W0208/04- ZW0208/04



MIDNIGHT
W0208/05- ZW0208/05



PARCHMENT
W0208/06- ZW0208/06



SAHARA
W0208/07- ZW0208/07

SILVAN

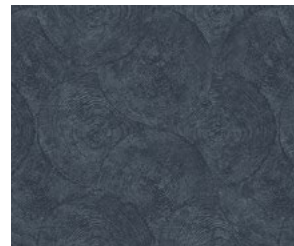
Silvan is a layered design that imitates tree rings with an etched appearance for added texture. The cloudiness of the design creates an ethereal quality printed onto vinyl.



CHARCOAL/GILVER
W0209/01- ZW0209/01



GILVER
W0209/02- ZW0209/02



MIDNIGHT
W0209/03- ZW0209/03



PUTTY
W0209/04- ZW0209/04



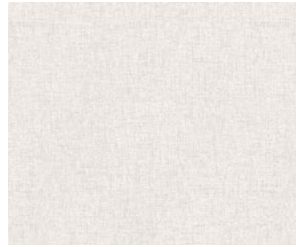
SAHARA
W0209/05- ZW0209/05

SIRPO

A more structured design, Sirpo leans into its hessian emboss to highlight the fabric-like quality of this wallcovering. For interiors that want to achieve a 'fabric on the wall' look, Sirpo is a sophisticated choice, with a metallic slub running through all colourways except one.



ASH
W0210/01- ZW0210/01



LINEN
W0210/02- ZW0210/02



OATMEAL
W0210/03- ZW0210/03



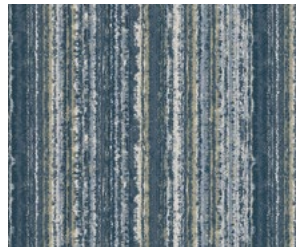
SLATE
W0210/04- ZW0210/04

STRIATUS

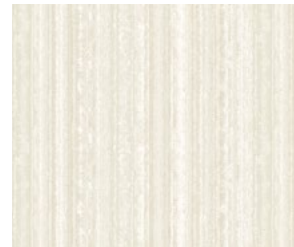
A non-traditional stripe, Striatus bears the markings of rock or sediment layers, depending on the direction in which you hang it. A versatile design, the emboss has a ribbed effect for texture, and the wallcovering can be hung vertically or horizontally.



CHARCOAL/GILVER
W0211/01- ZW0211/01



MIDNIGHT
W0211/02 - ZW0211/02



PARCHMENT
W0211/03- ZW0211/03



PEBBLE
W0211/04- ZW0211/04

TEXO

This mottled, cloudy design has a slub running over the top for a crisscross look that creates movement and flow. The hessian emboss adds a fabric-like texture, and metallic and matte options create distinct wallcoverings in this Texo design.



ALABASTER
W0212/01 - ZW0212/01



PEBBLE
W0212/02 - ZW0212/02



STEEL
W0212/03- ZW0212/03



CLARKE & CLARKE

EXPRESSIONS

PERFORMANCE WALLCOVERINGS

HEAD OFFICE

Voysey House, Sandersons Lane, London W4 4DS

SHOWROOM ADDRESS

Sanderson Design Group, 1st Floor, South Dome,
Design Centre Chelsea Harbour, SW10 0XE

CLARKE-CLARKE.SANDERSONDESIGNGROUP.COM

[@CLARKE_CLARKE_INTERIORS](https://www.instagram.com/CLARKE_CLARKE_INTERIORS)